

# REAL TIME PCR KITS

# REAL TIME PCR



Sansure Biotech  
圣湘生物

## Hepatitis B Viral DNA Quantitative

Sample Type: Serum, Plasma  
Genotype detection: A-H

### Fast

### MAG

Sample input: 5  $\mu$ l  
Linear range: -  
500 IU/ml to 5x10<sup>9</sup> IU/ml  
Sensitivity: - 100 IU/ml

Sample input: -  
200  $\mu$ l  
Linear range: -  
20 IU/ml to 2x10<sup>9</sup> IU/ml  
Sensitivity: - 10 IU/ml

Hepatitis B Virus YMDD Mutation DNA  
Diagnostic Kit : **S3046E 24T**

Hepatitis B Virus DNA Genotyping  
Fluorescence Diagnostic Kit : **S3035E 24T**

## Human Papilloma Virus DNA - FAST

Sample Type: Cervical area cells/fluid

HPV LR (6&11) Genotype    HPV HR (16&18) Genotype  
HPV 15 High Risk Screening    HPV (13 Pooled HR + 16&18)  
HPV DNA 15-Genotyping    HPV DNA 23-Genotyping

## Sexually Transmitted Diseases

CT/NG/UU DNA Fluorescence IVD Kit: **S3050E 48T**

**Sample Type:** Urine, Vaginal, Cervical and Male urethral swab  
**Detection Target:** CT, NG/UU DNA Sensitivity: 400 Copies/ml

DNA Fluorescence Diagnostic IVD Kit

Chlamydia Trachomatis : S3001E 48T  
Herpes Simplex Virus Type 2 : S3002E 48T  
Neisseria Gonorrhoeae : S3003E 48T  
Ureaplasma Urealyticum : S3004E 48T  
Herpes Simplex Virus : S3028E 48T  
Herpes simplex virus (HSV) (1&2) + Varicella-Zoster virus (VZV)  
CMV + EBV + HHV6 / HSV1 + HSV2 + VZV



SLAN<sub>96</sub> DUAL BLOCK

## CE-IVD Kits

## Hepatitis C Viral RNA MAG

Sample Type: Serum, Plasma  
Genotype detection : 1-6

### Genotyping

### Quantitative

Sample input: -  
200  $\mu$ l  
Linear range: -  
500 IU/ml to 5x10<sup>9</sup> IU/ml  
Sensitivity: - 1000 IU/ml

Sample input: -  
200  $\mu$ l  
Linear range: -  
50 IU/ml to 1x10<sup>10</sup> IU/ml  
Sensitivity: - 25 IU/ml

## HIV RNA Quantitative MAG

Sample Type: Serum, Plasma

Genotype detection

: A, D, F, J, AE, AG, N, O  
Sample input: 500  $\mu$ l  
Linear range: - 50 IU/ml to 5x10<sup>8</sup> IU/ml  
Sensitivity: - 50 IU/ml

## Respiratory Tract Diseases- FAST

Mycobacterium Tuberculosis DNA-MTB  
Mycoplasma Pneumoniae DNA  
Respiratory Syncytial Virus DNA  
Adenovirus DNA  
Bordetella Pertussis DNA  
(Mycoplasma + Chlamydia) pneumoniae + Legionella

## Pre & Postnatal Care

## Human Cytomegalovirus DNA-FAST

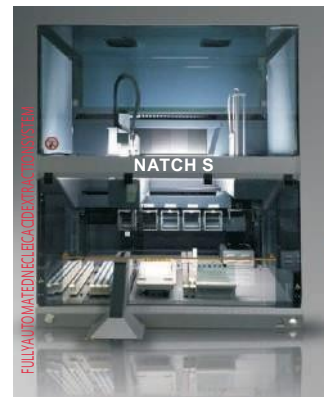
Human Cytomegalovirus DNA Fluorescence

## CancerMaker CE-IVD Kits

EGFR 29 mutations  
KRAS 19 Mutations Detection Kit  
BRAF V600 Mutation Detection Kit  
IK3CA5 Mutations Detection Kit  
HLA B27-FAST



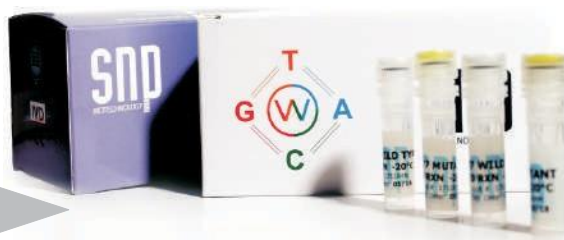
NATCH CS



NATCH S

FII Prothrombin Real Time PCR Kit  
 FV Cambridge Real Time PCR Kit  
 FV Leiden Real Time PCR Kit  
 FV R2 (H1299R) Real Time PCR Kit  
 FXIII Real Time PCR Kit  
 MTHFR 1298 Real Time PCR Kit  
 MTHFR 677 Real Time PCR Kit  
 PAI 4G/5G Real Time PCR Kit  
 CF Real Time PCR Kit (6 Mutations)  
 CF Real Time PCR Kit (8 Mutations)  
 SMAReal Time PCR Screening Kit  
 BetaThalassemiaRealTimePCRKit(6Mutations)  
 Connexin Real Time PCR Kit (3 Mutations)  
 HemochromatosisRealTimePCRKit(2Mutations)  
 HemochromatosisRealTimePCRKit(3Mutations)

BetaThalassemiaRealTimePCRKitMultiplex(12Mutations)  
 CFRealTimePCRKitMultiplex(18Mutations)  
 FMFRealTimePCRKitMultiplex(13Mutations)  
 FMFRealTimePCRKitMultiplex(20Mutations)  
 FMFRealTimePCRKitMultiplex(26Mutations)  
 ThrombophiliaRealTimePCRKitMultiplex(3Mutations)  
 ThrombophiliaRealTimePCRKitMultiplexA(4Mutations)  
 ThrombophiliaRealTimePCRKitMultiplexB(4Mutations)  
 ThrombophiliaRealTimePCRKitMultiplex(6Mutations)  
 ThrombophiliaRealTimePCRKitMultiplexA(8Mutations)  
 ThrombophiliaRealTimePCRKitMultiplexB(8Mutations) Y  
 Chromosome 8 MicrodeletionPCR Kit Multiplex  
 Warfarin Real Time PCR Kit (3Mutations)  
 Y Chromosome8 MicrodeletionY  
 Chromosome 10 MicrodeletionY  
 Chromosome 15  
 MicrodeletionJak-2 Real Time  
 PCR Kit  
 HLA B5 Real Time PCR Kit  
 HLA B51 Real Time PCR Kit  
 HLA B52 Real Time PCR Kit  
 HLA B27 Real Time PCR Kit



**RTA**

CMV Real Time PCR Kit (CE 0483)  
 HBV Real Time PCR Kit(CE 0483)  
 HCV Real Time PCR Kit (CE 0483)  
 HIV-1 Real Time PCR Kit (CE 0483)  
 HSV 1&2 Real Time PCR Kit (CE)  
 MTBC Real Time PCR Kit (CE)  
 VZV Real Time PCR Kit (CE)  
 EBV Real Time PCR Kit(CE)  
 P. Jirovecii Real Time PCR Kit (CE)  
 E. Histolytica Real Time PCR Kit (CE)  
 T.Gondii Real Time PCR Kit (RUO)  
 BKV Real Time PCR Kit (CE)  
 HCV Genotyping Real Time PCR Kit  
 Viral DNA Isolation Kit  
 Viral NA IsoLATION KIT  
 Viral RNA Isolation Kit



**REAL TIME PCR KIT**





One assay  
Multiple pathogens  
detection

# CerTest VIASURE

BIOTECH REAL TIME PCR KIT

Lyophilised  
→ product

Same  
→ Thermo-protocol  
for all kits

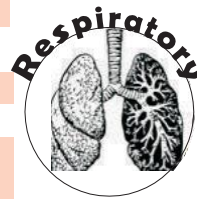
→ Shelf-life  
24 months



NOR	Norovirus GI +GII
SCY	Salmonella, Campylobacter & Yersinia enterocolitica
SCS	Salmonella, Campylobacter & Shigella/EIEC
AEY	Campylobacter coli, C. lari & C. jejuni Aeromonas spp + Yersinia enterocolitica
BLD	Blastocystis hominis + Dientaeba fragilis
EEE	E. coli EHEC, EPEC & EIEC
CLA	H. pylori + Clarithromycin resistance
CDA	Clostridium difficile toxins A+B
KGE	Cryptosporidium, Giardia & E. histolytica

ABR  
PIZ

HXN	Flu A, Flu B & RSV Parainfluenza (1, 3 & 2, 4) Flu Typing II (H1N1, H5N1, H3N2 & H7N9)
AMB	Adenovirus, Metapneumovirus & Bocavirus
RPA	Respiratory Panel I [(Flu A, Flu B & RSV) + (H1N1, H5N1, H3N2 & H7N9)]



RHE	Rhinovirus + Enterovirus
MER	MERS Coronavirus
COR	Coronavirus (229E, NL63, 0C43 & HKU1)
BDT	Bordetella (B. pertussis, B. parapertussis & B. holmesii)
CML	C. pneumoniae, M. pneumoniae & L. pneumophila
HSM	H. influenzae, S. pneumoniae & M. catarrhalis



ZDC	Zika, Dengue & Chikungunya Virus
DES	Dengue Serotyping (Dengue 1, 4 & 2,3)
WNV	West Nile Virus
FEV	Yellow Fever
MYV	Mayaro Virus
JEV	Japanese Encephalitis Virus
CCV	Crimean-Congo Haemorrhagic Fever
CHA	Parasite Trypanosoma cruzi (Chagas)

STD	N. gonorrhoeae, C. trachomatis & M. genitalium + T. vaginalis, U. urealyticum, U. parvum & M. hominis
HHT	Herpes virus 1, Herpes virus 2 & Treponema pallidum
HCT	H. ducreyi + C. trachomatis (LGV)
CGT	C. albicans, G. vaginalis, T. vaginalis
HPV	Human Papilloma Virus 16 + 18



HHZ	Herpes Virus 1+2 & Varicella Zoster Virus
BJV	BK + JC Virus
SLE	S. agalactiae, L. monocytogenes & E. coli
HNS	H. influenzae, H. meningitidis & S. pneumoniae



**MeltPro<sup>®</sup> Real-Time PCR Kits for Tuberculosis**

- MeltPro MTB/RIF Test Kit**  
Qualitative detection of rifampin resistance mutations in MTB
- MeltPro MTB/INH Test Kit**  
Qualitative detection of isoniazid resistance mutations in MTB
- MeltPro MTB/EMB Test Kit**  
Qualitative detection of ethambutol resistance mutations in MTB
- MeltPro MTB/STR Test Kit**  
Qualitative detection of streptomycin resistance mutations in MTB
- MeltPro MTB/FQ Test Kit**  
Qualitative detection of fluoroquinolones resistance mutations in MTB
- MeltPro MTB/SL Test Kit**  
Qualitative detection of Second line Injectable  
Drug resistance mutations in *Mycobacterium tuberculosis*
- MeltPro MTB Test Kit**  
Suitable for the rapid qualitative detection of *Mycobacterium tuberculosis*
- MeltPro Mycobacterium tuberculosis MsSpoligotyping Test Kit**  
Suitable for the rapid genotyping of MTB
- MeltPro Mycobacterium identification Kit**  
Identification of 19 mycobacterial species

**MeltPro<sup>®</sup> Real-Time PCR kits for Pharmacogenomics**

- MeltPro NAT 2 Test**  
Detection of four common SNPs in NAT2 gene involved in the metabolism of isoniazid to assist clinicians to personalize isoniazid doses.
- MeltPro HLA-B \*15:02 Test**  
Detection of the *HLA-B\*15:02* allele to identify patients who may be at greater risk of Cabamazepine induced adverse reactions.
- MeltPro HLA-B\*58:01 Test**  
Detection of the *HLA-B\*58:01* allele to identify patients who may be at greater risk of Allopurinol induced adverse reactions.
- MeltPro CYP2C19 Test**  
Detection of three SNPs in *CYP2C19* gene to assist clinicians to determine therapeutic strategy for drugs that are metabolized by *CYP2C19*.
- MeltPro Warfarin Genotyping Kit**  
Detection of four SNPs related to warfarin response to assist clinicians to manage the individualized administration of warfarin.

**Real time PCR Reagents for Leukemia**

- Leukemia Fusion Genes (Q30) Screening Kit**  
Screening of 30 fusion genes resulted from chromosome translocations in chronic and acute leukemia,
- AML Q Fusion Screening Kit**  
translocations in acute myelocytic leukemia  
Screening of 16 fusion genes resulted from chromosome
- ALL Q Fusion Screening Kit**  
Screening of 16 fusion genes resulted from chromosome translocations in acute lymphocytic leukemia
- BCR ABL1 Genotyping Kit**  
Used for BCR ABL1 genotyping, including p190 isoform and p210 isoform in leukemia
- PML RARa Genotyping Kit**  
Used for PML RaRa genotyping, including V isoform, S isoform, and L isoform in leukemia

**20 tests/kit**

**Drug resistance for MTB on Melt Prob**

**Better Solution for Molecular Diagnostics**

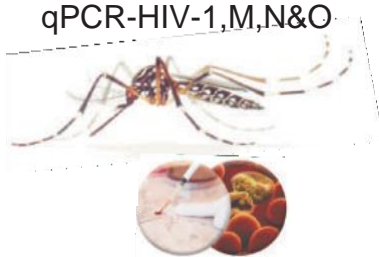
**Leukemia Q-Fusion single fusion gene kits for**

(*AML1ETO, BCRABL1 p190, BCRABL1 p210, PMLRARA L, PMLRARA S, PMLRARA V, NPMRARA, PLZFRARA, CBF4MYH11, TELAML1, FIP1L1PDGFRA, DEKCAN, TELABL1, MLLAF9, MLLAF4, E2A,PBX-1, MLL-ENL, SILTAL-1, MLL-AF10, AML-1MDS1/EV11, E2A-HLF, SET-CAN, MLL-SEPT6, TEL-PDGFRB, TLS-ERG, MLL-ELL, MLL-AF17, NPM-1MLF1, MLL-AF1q, MLL-AF1p, AML-1-MTG16, MLL-AF6, AML1-EAP, NPM-1ALK, CAL-MAF10, HOX11, HOX-11L2, EVI-1, Wt1*)

**MEDIVEN MEDICAL INNOVATION VENTURES**

**GenoAmp Real-Time PCR**

- Dengue\Chiku Combo CT/NGU.spp.
- Zika\Dengue\Chiku Triplex TV/MG/MH
- Tropical Fever (*Whole Blood*)  
(*Leptospira spp., Burkholderia Salmonella spp., Plasmodium*)  
qPCR-HIV-1,M,N&O
- Leptospira spp.
- Malaria-  
*P.falciparum, P.vivax P.ovale, P.malariae, P.knowlesi*
- Flu A/H1N1/H3N2/FluB/MERS-CoV  
Parainfluenza 1-4
- Adenovirus/Metapneumovirus/MTBC/NTM



**ProDetect Dipstick**

- Drug Abuse Test (AMP/BZO/MET/MOP/THC)
- Drug Abuse Test (5-in-1,4-in-1)



EVIDENCE-BASED

INNOVATIVE

INTEGRITY

RESPONSEBLE



**VIRALDETECTION**

**HBV QNP2.0**

Quantification of HBV  
Genotypes A-F  
Serum  
10 IU/ml  
2x10<sup>1</sup>-2x10<sup>9</sup> IU/ml

**HCV QNP2.1**

Quantification of HCV  
Genotypes 1-6  
Serum  
26 IU/ml  
2x10<sup>2</sup>-2x10<sup>10</sup> IU/ml

**HIV-1 QNP1.1**

Quantification of HCV  
Group M genotypes A-H  
Serum  
60 IU/ml  
2x10<sup>2</sup>-2x10<sup>10</sup> IU/ml

**HDV QNP1.0**

Quantification of HDV  
Genotypes 1-7  
Serum  
400 IU/ml  
1x10<sup>3</sup>-1x10<sup>10</sup> IU/ml

**VIRALDETECTION**

**CMV QNP 3.0**

Quantification of CMV  
ALL major types  
Serum  
48 copies/ml  
2x10<sup>2</sup>-2x10<sup>10</sup> Copies/ml

**EBV QNP 1.0**

Quantification of EBV  
ALL major types  
Serum  
380 copies/ml  
5x10<sup>2</sup>-5x10<sup>9</sup> Copies/ml

**Parvovirus B19 QNP 1.0 BKV QNP1.0**

Quantification of ParoVirus  
ALL major types  
Serum  
90 IU/ml  
1.5x10<sup>2</sup>-1.5x10<sup>8</sup> IU/ml

Quantification of BKV  
ALL major types  
Serum,Plasma,Urine  
32 copies/ml  
1x10<sup>2</sup>-1x10<sup>8</sup> Copies/ml

**BACTERIALDETECTION**

**VREQLP1.0**

vanA and vanB genes  
All VRE genotypes  
Serum,Plasma  
VRE: 100 Copies/ml

**MTBC QLP2.1**

Detection of MTBC  
MTBC FAMILY  
Serum,Plasma,sputum,  
CSF, alveolar lavage,  
800 Copies/ml

**JCV QNP 1.0**

Quantification of JCV  
ALL major types  
Serum,Plasma,Urine  
45 copies/ml  
4x10<sup>1</sup>-4x10<sup>9</sup> Copies/ml

**HSV QLP 2.1**

Detection of genotype  
HSV 1 & 2  
Serum,Plasma  
HSV-1: 100,  
HSV-2: 10 Copies/ml



**D I A C A R T A**

**PRECISION MOLECULAR DIAGNOSTICS**

**Q Clamp® Gene Mutation Detection Tests**

Q Clamp KRAS MutationDetection  
(Codons 12,13,59,61,117 and146)

Q Clamp BRAF MutationDetection  
(Codon600)

Q Clamp NRAS MutationDetection  
(Codons 12,13,59,61,117 and146)

Q Clamp JAK-2 MutationDetection  
(Codon617)

Q Clamp EGFR MutationDetection  
(Codons 719,861,Ex19del,ex20insASV  
and S768I,T790M and L858R)

Q Clamp PIK3CA MutationDetection  
(Codons 542,545 andI047)

**ColoScape™ Colorectal Cancer MutationTest**  
24Reactions

**QFusion™ EML4-ALK and KIF5B-ALK**  
Fusion Gene Detection Kit- 20 Reactions

**RadTox™ cfDNA Test 96 Reactions**

**QuantiVirus™ HPV E6/E7 mRNA Test**  
for Cervical Cancer-96 Reactions

**CRISPR-Quest Gene-Editing Event ScreeningKit**  
500Reactions

**QuantiVirus™ HPV E6/E7 mRNA Test**  
for Head and Neck Cancer-96 Reactions



## Our Partners

**InBios**

**NOVATEC**  
IMMUNDIAGNOSTICA GMBH

**VIROTECH**  
DIAGNOSTICS

**DBC**  
Diagnostics Biochem Canada

**ZEEAN**

**GA**  
Generic Assays

**SCIMEDX**  
Leading in the West West

**DACARTA**

Dia Pro  
Diagnostic  
Bio Probes art  
**DIA. PRO**

**LDN**

**CerTest-Viasure**

**SND**  
Biotechnology

**FULLER**  
LABORATORIES



Sansure Biotech

**RTA**

**MEDIVEN**

**IONTEK**

**Biopanda**  
Reagents



***Our Belief Better Science Better Tomorrow***

**H.O Office:**

InbiosIndia

D-10/5, Okhla Industrial Area Phase I

New Delhi 110020

Contact Number: 011-45635607, 9821193636

Email: [sales@inbiosindia.com](mailto:sales@inbiosindia.com)

Website: [www.inbiosindia.com](http://www.inbiosindia.com)